

# \$5,290,000 - 17250 Stony Plain Road, Edmonton

MLS® #E4397630

**\$5,290,000**

0 Bedroom, 0.00 Bathroom,  
Industrial on 0.00 Acres

Mayfield, Edmonton, AB

Located on Stony Plain Road and 172 Street, this versatile property offers unparalleled visibility and foot traffic. 20,300 SF former auto dealership space split up into showroom and warehouse with multiple grade doors on a 0.88 Acre site with and extra 13,300 SF of additional underground parking.

Built in 1988

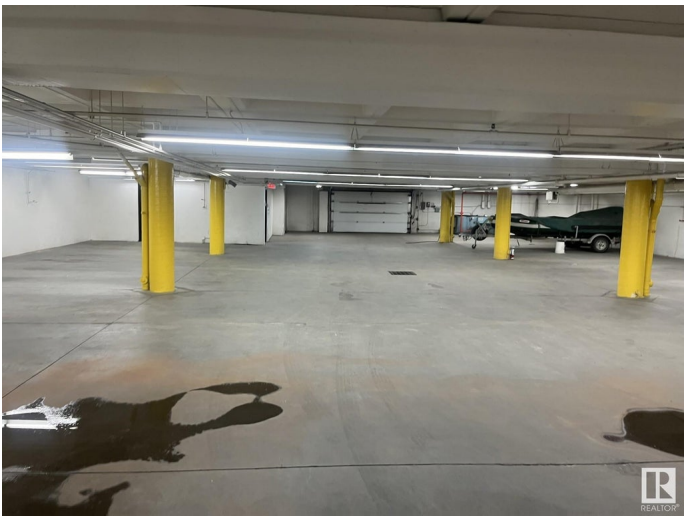
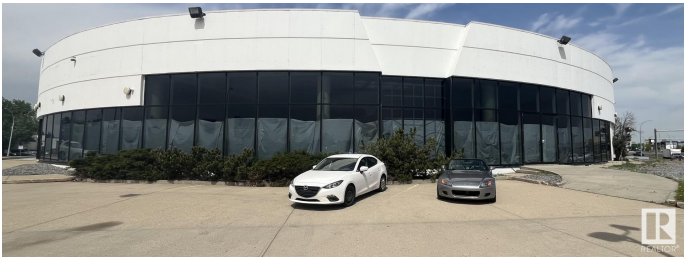
## Essential Information

MLS® #	E4397630
Price	\$5,290,000
Bathrooms	0.00
Acres	0.00
Year Built	1988
Type	Industrial
Status	Active

## Community Information

Address	17250 Stony Plain Road
Area	Edmonton
Subdivision	Mayfield
City	Edmonton
County	ALBERTA
Province	AB
Postal Code	T5S 1K6

## Exterior



Exterior	Concrete
Construction	Concrete

**Additional Information**

Date Listed	July 15th, 2024
Days on Market	341
Zoning	Zone 21

DATA IS DEEMED RELIABLE BUT IS NOT GUARANTEED ACCURATE BY THE REALTORS® ASSOCIATION OF EDMONTON. COPYRIGHT 2025 BY THE REALTORS® ASSOCIATION OF EDMONTON. ALL RIGHTS RESERVED.Trademarks are owned or controlled by the Canadian Real Estate Association (CREA) and identify real estate professionals who are members of CREA (REALTOR®, REALTORS®) and/or the quality of services they provide (MLS®, Multiple Listing Service®)

Listing information last updated on June 21st, 2025 at 4:48pm MDT