

\$219,900 - 804 10025 113 Street, Edmonton

MLS® #E4421882

\$219,900

1 Bedroom, 1.50 Bathroom, 1,056 sqft
Condo / Townhouse on 0.00 Acres

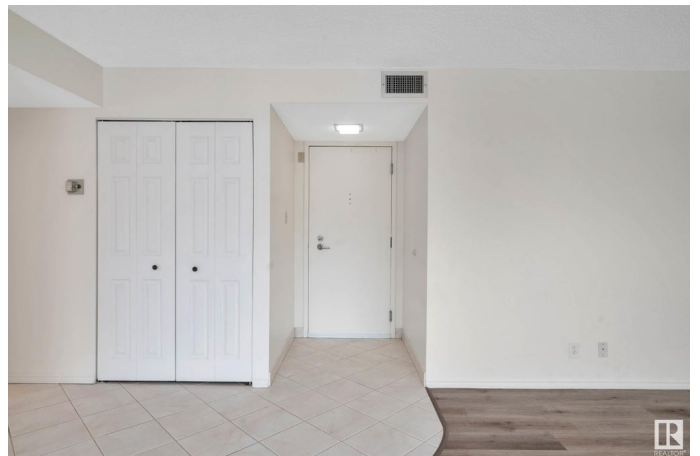
Wähkwãntãwin, Edmonton, AB

Welcome to this wonderful UPGRADED condo that combines comfort, and convenience in the city. The dining room and living room have plenty of large windows that let in lots of natural light. The large open “flex area” allows you the extra space for either a dining room or an office OR convert it into a spare bedroom for your company. The kitchen offers plenty cabinetry and countertop space. The primary bedroom has a spacious layout and a 4 piece ensuite bathroom. 2 pc. guest bathroom. Large private balcony. With just four units on each floor, privacy and tranquility are guaranteed. PLUS this unit comes with TWO TITLED PARKING STALLS. Additional amenities include a unique solarium/library where you can focus on your studies or unwind with a good book. Location couldn't be better “ a mere 6 minutes from the U of A, 7 min from Grant MacEwan, 10 minutes to the Royal Alexandra Hospital, and 5 minutes to Victoria Park this condo offers a blend of convenience and urban lifestyle. Don“t miss this opportunity.

Built in 1978

Essential Information

MLS® #	E4421882
Price	\$219,900



Bedrooms	1
Bathrooms	1.50
Full Baths	1
Half Baths	1
Square Footage	1,056
Acres	0.00
Year Built	1978
Type	Condo / Townhouse
Sub-Type	Apartment High Rise
Style	Single Level Apartment
Status	Active

Community Information

Address	804 10025 113 Street
Area	Edmonton
Subdivision	Wöhkwãntãwin
City	Edmonton
County	ALBERTA
Province	AB
Postal Code	T5K 2K8

Amenities

Amenities	No Smoking Home, Parking-Visitor, Party Room, Storage-In-Suite
Parking Spaces	2
Parking	Heated, Parkade, Stall, Underground

Interior

Interior Features	ensuite bathroom
Appliances	Dishwasher-Built-In, Dryer, Refrigerator, Stove-Electric, Washer, Window Coverings, Microwave Hood Fan-Two
Heating	Fan Coil, Natural Gas
# of Stories	16
Stories	1
Has Basement	Yes
Basement	None, No Basement

Exterior

Exterior	Concrete, Brick
Exterior Features	Golf Nearby, Park/Reserve, Public Transportation, Shopping Nearby,

	View City
Roof	Tar & Gravel
Construction	Concrete, Brick
Foundation	Slab

Additional Information

Date Listed	February 18th, 2025
Days on Market	23
Zoning	Zone 12
Condo Fee	\$789

DATA IS DEEMED RELIABLE BUT IS NOT GUARANTEED ACCURATE BY THE REALTORS® ASSOCIATION OF EDMONTON. COPYRIGHT 2025 BY THE REALTORS® ASSOCIATION OF EDMONTON. ALL RIGHTS RESERVED. Trademarks are owned or controlled by the Canadian Real Estate Association (CREA) and identify real estate professionals who are members of CREA (REALTOR®, REALTORS®) and/or the quality of services they provide (MLS®, Multiple Listing Service®)

Listing information last updated on March 13th, 2025 at 4:17am MDT