

\$519,900 - 8911 Elves Loop, Edmonton

MLS® #E4422111

\$519,900

3 Bedroom, 2.50 Bathroom, 1,462 sqft
Single Family on 0.00 Acres

Edgemont (Edmonton), Edmonton, AB

Welcome to the Emerson model built by Excel Homes 35 year builder in sought after EDGEMONT! On a quiet street, this beautiful UPGRADED half duplex with FRONT DOUBLE ATTACHED GARAGE awaits. Upon entering you are greeted with 9 FOOT MAIN FLOOR CEILING, LVP flooring, THICK 1.25" QUARTZ THROUGHOUT including kitchen countertops , stove-electric, refrigerator, dishwasher built-in & over the range microwave. The kitchen which has PENDANT LIGHTS, upgraded nook light fixture & opens to the living room. 1/2 bath completes the main floor. Upstairs is premium carpet, 3 bedrooms, including large primary with walk in closet, and 4 piece ensuite. Laundry and full main bath complete the upper level. SEPARATE ENTRANCE, BASEMENT CEILING HEIGHT 9 FT, ROUGH-IN READY for LEGAL SUITE. GREEN BUILT certified, includes tankless water system,HRV, insulated lines, upgraded insulation, eco bee thermostat, low E windows, solar panel rough-in and much more! REAR DECK & PREMIUM SIDING INCLUDED!
Close to ALL amenities!

Built in 2025

Essential Information

| | |
|--------|-----------|
| MLS® # | E4422111 |
| Price | \$519,900 |



Bedrooms 3
 Bathrooms 2.50
 Full Baths 2
 Half Baths 1
 Square Footage 1,462
 Acres 0.00
 Year Built 2025
 Type Single Family
 Sub-Type Half Duplex
 Style 2 Storey
 Status Active

Community Information

Address 8911 Elves Loop
 Area Edmonton
 Subdivision Edgemont (Edmonton)
 City Edmonton
 County ALBERTA
 Province AB
 Postal Code T6M 3G2

Amenities

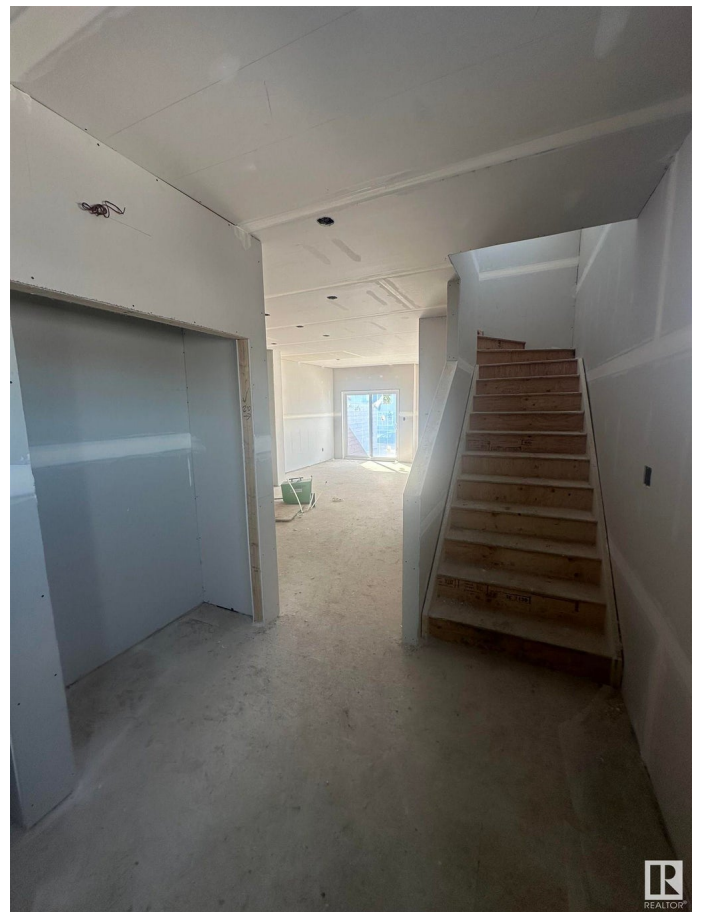
Amenities Ceiling 9 ft., Deck, De
 Insulation-Upgraded, Smart/F
 System, 9 ft. Basement Ceilin
 Parking Double Garage Attached

Interior

Interior Features ensuite bathroom
 Appliances Dishwasher-Built-In, Dryer, C
 Hood Fan, Refrigerator, Stov
 Heating Forced Air-1, Natural Gas
 Stories 2
 Has Basement Yes
 Basement Full, Unfinished

Exterior

Exterior Wood, Stone, Vinyl
 Exterior Features Flat Site, Partially Landscaped, Playground Nearby, Public



| | |
|--------------|-------------------------|
| | Transportation, Schools |
| Roof | Asphalt Shingles |
| Construction | Wood, Stone, Vinyl |
| Foundation | Concrete Perimeter |

Additional Information

| | |
|----------------|---------------------|
| Date Listed | February 19th, 2025 |
| Days on Market | 63 |
| Zoning | Zone 57 |

DATA IS DEEMED RELIABLE BUT IS NOT GUARANTEED ACCURATE BY THE REALTORS® ASSOCIATION OF EDMONTON. COPYRIGHT 2025 BY THE REALTORS® ASSOCIATION OF EDMONTON. ALL RIGHTS RESERVED. Trademarks are owned or controlled by the Canadian Real Estate Association (CREA) and identify real estate professionals who are members of CREA (REALTOR®, REALTORS®) and/or the quality of services they provide (MLS®, Multiple Listing Service®)

Listing information last updated on April 23rd, 2025 at 7:32pm MDT