

\$0 - 6410 104 St, Edmonton

MLS® #E4424924

\$0

0 Bedroom, 0.00 Bathroom,
Office on 0.00 Acres

Allendale, Edmonton, AB

Newly constructed office space for lease. 1000 sq ft +/- Conveniently situated in central South Edmonton, with easy access to major routes with visibility from 104th Street Southbound with VPD of 22,800. 2 assigned parking stalls. \$2900/month gross lease

Built in 2020

Essential Information

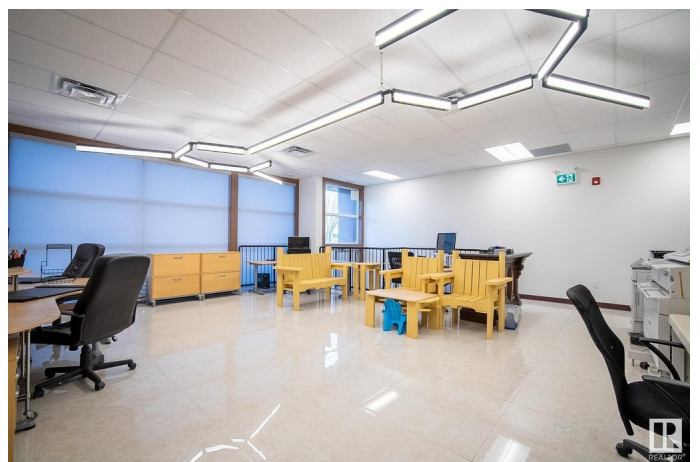
MLS® #	E4424924
Bathrooms	0.00
Acres	0.00
Year Built	2020
Type	Office
Status	Active

Community Information

Address	6410 104 St
Area	Edmonton
Subdivision	Allendale
City	Edmonton
County	ALBERTA
Province	AB
Postal Code	T6H 2L2

Exterior

Exterior	Wood Frame
----------	------------



Construction Wood Frame

Additional Information

Date Listed March 10th, 2025

Days on Market 37

Zoning Zone 15

DATA IS DEEMED RELIABLE BUT IS NOT GUARANTEED ACCURATE BY THE REALTORS® ASSOCIATION OF EDMONTON. COPYRIGHT 2025 BY THE REALTORS® ASSOCIATION OF EDMONTON. ALL RIGHTS RESERVED. Trademarks are owned or controlled by the Canadian Real Estate Association (CREA) and identify real estate professionals who are members of CREA (REALTOR®, REALTORS®) and/or the quality of services they provide (MLS®, Multiple Listing Service®)

Listing information last updated on April 16th, 2025 at 4:32am MDT