

\$700,000 - 8851 92 Street, Edmonton

MLS® #E4429112

\$700,000

4 Bedroom, 2.50 Bathroom, 1,553 sqft

Single Family on 0.00 Acres

Bonnie Doon, Edmonton, AB

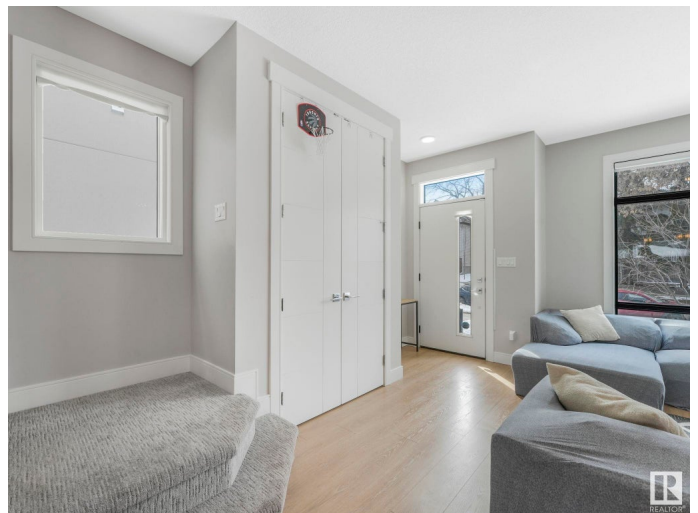
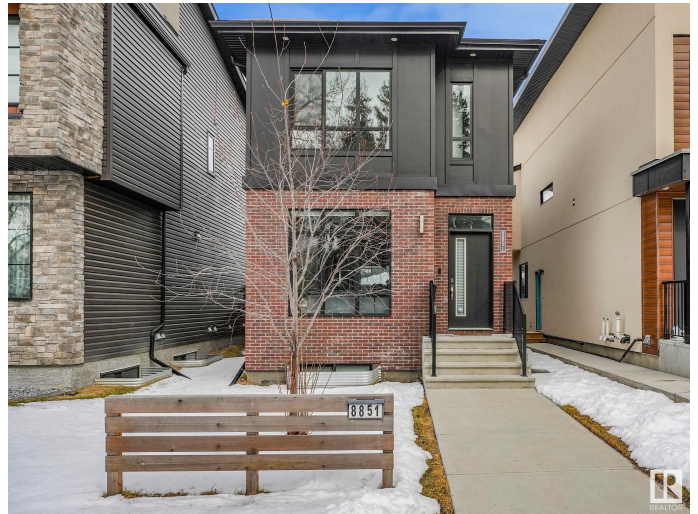
Welcome to this stylish 2020-built infill in the heart of Bonnie Doon! This 4-bed, 2.5-bath home combines modern design & functionality, featuring an open-concept layout, central AC, 9ft ceilings, upgraded fixtures & oversized windows throughout. Enjoy a chef's kitchen with a gas cooktop, built-in oven & microwave, French door fridge, wine cooler & massive quartz island w/ a granite sink. The living room boasts a striking gas fireplace while the spacious dining area easily seats eight. Upstairs, all bedrooms have custom built-in shelving & the spa-like ensuite offers dual sinks, a soaker tub & a rain shower w/ pebbled stone flooring. The basement includes a finished rec room, rough-in plumbing for 3rd full bath & the 4th bedroom. This move-in ready home comes complete with a double garage, Hardie board & brick exterior, fenced yard & deck. Steps from trails, Campus Saint-Jean, parks & the new LRT, with quick access to Whyte Ave, downtown & U of A. Exceptional value in an unbeatable location—don't miss it!

Built in 2020

Essential Information

MLS® # E4429112

Price \$700,000



Bedrooms	4
Bathrooms	2.50
Full Baths	2
Half Baths	1
Square Footage	1,553
Acres	0.00
Year Built	2020
Type	Single Family
Sub-Type	Detached Single Family
Style	2 Storey
Status	Active

Community Information

Address	8851 92 Street
Area	Edmonton
Subdivision	Bonnie Doon
City	Edmonton
County	ALBERTA
Province	AB
Postal Code	T6C 3P9

Amenities

Amenities	On Street Parking, Air Conditioner, Carbon Monoxide Detectors, Ceiling 9 ft., Closet Organizers, Deck, Detectors Smoke, Vinyl Windows, Infill Property
Parking Spaces	4
Parking	Double Garage Detached, Rear Drive Access

Interior

Interior Features	ensuite bathroom
Appliances	Air Conditioning-Central, Dishwasher-Built-In, Dryer, Garage Control, Garage Opener, Hood Fan, Oven-Built-In, Oven-Microwave, Refrigerator, Stove-Countertop Gas, Washer, Wine/Beverage Cooler, TV Wall Mount
Heating	Forced Air-1, Natural Gas
Fireplace	Yes
Fireplaces	Mantel, Tile Surround
Stories	3
Has Basement	Yes

Basement Full, Partially Finished

Exterior

Exterior Wood, Brick, Hardie Board Siding, Vinyl

Exterior Features Back Lane, Fenced, Flat Site, Golf Nearby, Landscaped, Park/Reserve, Picnic Area, Playground Nearby, Public Swimming Pool, Public Transportation, Schools, Shopping Nearby, Ski Hill Nearby, See Remarks

Roof Asphalt Shingles

Construction Wood, Brick, Hardie Board Siding, Vinyl

Foundation Concrete Perimeter

School Information

Elementary École Maurice-Lavallée

Middle St Brendan

High Austin O'Brien

Additional Information

Date Listed April 4th, 2025

Days on Market 13

Zoning Zone 18

DATA IS DEEMED RELIABLE BUT IS NOT GUARANTEED ACCURATE BY THE REALTORS® ASSOCIATION OF EDMONTON. COPYRIGHT 2025 BY THE REALTORS® ASSOCIATION OF EDMONTON. ALL RIGHTS RESERVED. Trademarks are owned or controlled by the Canadian Real Estate Association (CREA) and identify real estate professionals who are members of CREA (REALTOR®, REALTORS®) and/or the quality of services they provide (MLS®, Multiple Listing Service®)

Listing information last updated on April 17th, 2025 at 1:32am MDT