

\$234,999 - 3242 130a Avenue, Edmonton

MLS® #E4434785

\$234,999

3 Bedroom, 3.00 Bathroom, 1,389 sqft

Condo / Townhouse on 0.00 Acres

Belmont, Edmonton, AB

This beautifully designed end-unit townhouse offers the perfect blend of space, comfort, and convenience—ideal for first-time buyers or growing families. With 3 bedrooms, 2 full bathrooms, and 2 half-baths, this home features a spacious layout that includes a welcoming foyer, a bright open-concept living and dining area, and direct access to a fully fenced, landscaped backyard through sliding patio doors. The kitchen is thoughtfully laid out with a large window, pantry, plenty of cabinetry, and ample counter space to make meal prep easy and enjoyable. Upstairs, you'll find three generously sized bedrooms, including a primary suite complete with a walk-in closet, 2-piece ensuite, and your own private rooftop balcony—a perfect retreat for morning coffee or evening relaxation. The fully finished basement expands your living space with a large rec room featuring a gas fireplace, a 3-piece bathroom, and multiple storage areas. Additional perks include an attached single garage and access to visitor parking i

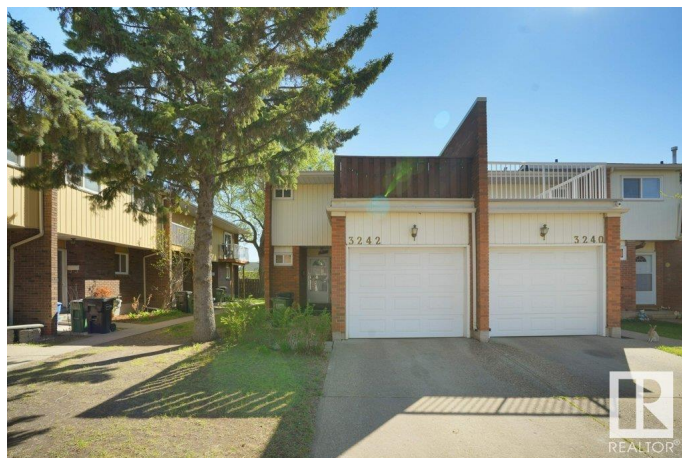
Built in 1976

Essential Information

MLS® # E4434785

Price \$234,999

Bedrooms 3



Bathrooms	3.00
Full Baths	2
Half Baths	2
Square Footage	1,389
Acres	0.00
Year Built	1976
Type	Condo / Townhouse
Sub-Type	Townhouse
Style	2 Storey
Status	Active

Community Information

Address	3242 130a Avenue
Area	Edmonton
Subdivision	Belmont
City	Edmonton
County	ALBERTA
Province	AB
Postal Code	T5A 3K3

Amenities

Amenities	Deck, Detectors Smoke, No Animal Home, No Smoking Home, Parking-Visitor, See Remarks
Parking	Single Garage Attached

Interior

Interior Features	ensuite bathroom
Appliances	Dishwasher - Energy Star, Dryer, Microwave Hood Fan, Refrigerator, Stove-Electric, Washer
Heating	Forced Air-1, Natural Gas
Fireplace	Yes
Fireplaces	Brick Facing, Insert
Stories	3
Has Basement	Yes
Basement	Full, Finished

Exterior

Exterior	Wood, Brick, Vinyl
Exterior Features	Fenced, Flat Site, Playground Nearby, Public Transportation, Schools,

	Shopping Nearby, See Remarks
Roof	Asphalt Shingles
Construction	Wood, Brick, Vinyl
Foundation	Concrete Perimeter

Additional Information

Date Listed	May 6th, 2025
Days on Market	42
Zoning	Zone 35
Condo Fee	\$439

DATA IS DEEMED RELIABLE BUT IS NOT GUARANTEED ACCURATE BY THE REALTORS® ASSOCIATION OF EDMONTON. COPYRIGHT 2025 BY THE REALTORS® ASSOCIATION OF EDMONTON. ALL RIGHTS RESERVED. Trademarks are owned or controlled by the Canadian Real Estate Association (CREA) and identify real estate professionals who are members of CREA (REALTOR®, REALTORS®) and/or the quality of services they provide (MLS®, Multiple Listing Service®)

Listing information last updated on June 17th, 2025 at 10:48am MDT