

# \$419,999 - 16714 111 Avenue, Edmonton

MLS® #E4439213

**\$419,999**

0 Bedroom, 0.00 Bathroom,  
Industrial on 0.00 Acres

West Sheffield Industrial, Edmonton, AB

Move-in ready and full of potential! This clean and versatile 2,200± sq. ft. commercial condo is an incredible opportunity for businesses of all kinds—ideal for storage, light manufacturing, automotive repair or detailing, general contracting, breweries, or distilleries. Measuring 23'™ wide by 96'™ long, the unit features a rear bay door with convenient ground-level loading and includes a 100± sq. ft. mezzanine. With quick access to both Yellowhead Trail and Anthony Henday via 111th or 167th, this prime location keeps you connected. Opportunities like this don't last!

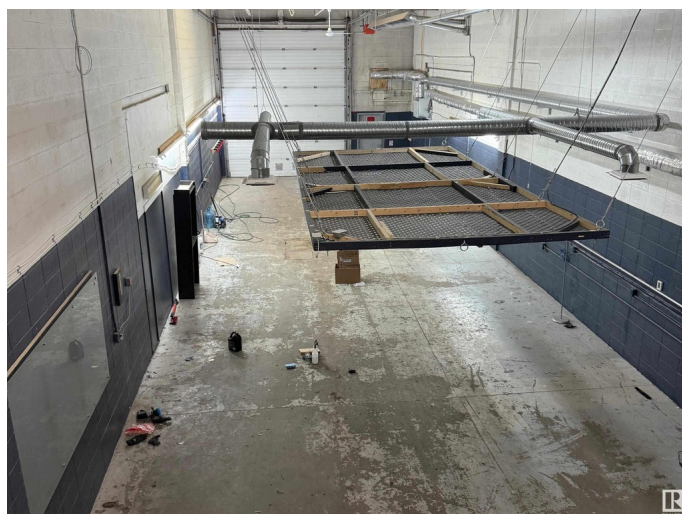
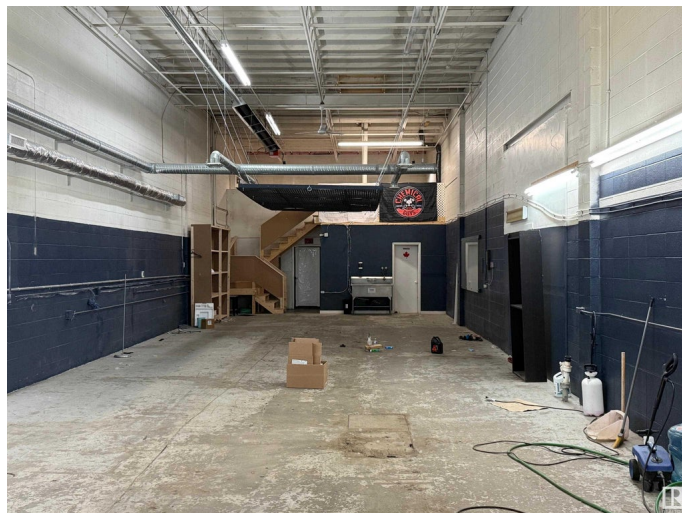
Built in 1969

## Essential Information

MLS® #	E4439213
Price	\$419,999
Bathrooms	0.00
Acres	0.00
Year Built	1969
Type	Industrial
Status	Active

## Community Information

Address	16714 111 Avenue
Area	Edmonton



Subdivision	West Sheffield Industrial
City	Edmonton
County	ALBERTA
Province	AB
Postal Code	T5M 2S5

### Exterior

Exterior	Concrete
Construction	Concrete

### Additional Information

Date Listed	May 29th, 2025
Days on Market	17
Zoning	Zone 40

DATA IS DEEMED RELIABLE BUT IS NOT GUARANTEED ACCURATE BY THE REALTORS® ASSOCIATION OF EDMONTON. COPYRIGHT 2025 BY THE REALTORS® ASSOCIATION OF EDMONTON. ALL RIGHTS RESERVED. Trademarks are owned or controlled by the Canadian Real Estate Association (CREA) and identify real estate professionals who are members of CREA (REALTOR®, REALTORS®) and/or the quality of services they provide (MLS®, Multiple Listing Service®)

Listing information last updated on June 15th, 2025 at 8:17pm MDT