

## \$499,000 - 10835 152 Street, Edmonton

MLS® #E4439426

**\$499,000**

5 Bedroom, 3.00 Bathroom, 1,604 sqft

Single Family on 0.00 Acres

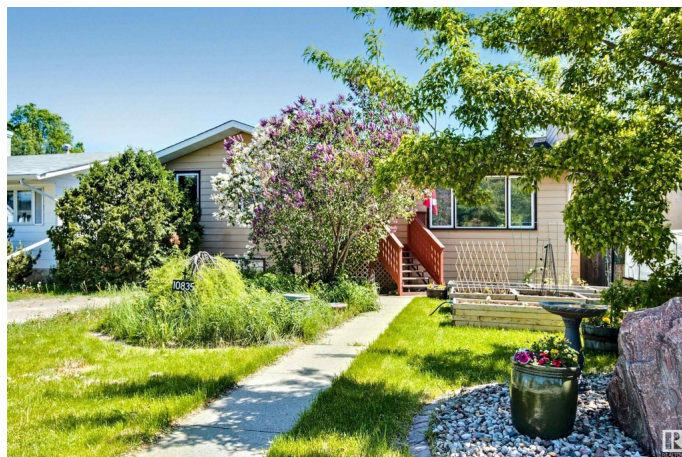
High Park (Edmonton), Edmonton, AB

Charming 1603 sq ft bungalow in wonderful High park. This home features 5 bedrooms, and a partially finished basement. This home is beautiful maintained and has a tonne of indoor/outdoor potential. This home features 5 bedrooms, 3 bathrooms, massive kitchen and dining room, large living room with wood burning fire place, the primary bedroom includes a full ensuite and a partially finished basement. The exterior of the home features a 50 x 150ft lot (subdividable), a double detached garage, a orchid type feel with 2 pear trees, apple tree, 2 saskatoon berry bushes, 4 blueberry bushes, a raspberry patch, strawberry's, and a raised garden bed. Upgrades include radon mitigation system, water on demand, newer garage door, central A/C, newer sink, newer upstairs bathroom, double ovens, new roof and so much more. A wonderful opportunity and truly a must see.

Built in 1981

### Essential Information

MLS® #	E4439426
Price	\$499,000
Bedrooms	5
Bathrooms	3.00
Full Baths	3
Square Footage	1,604



Acres	0.00
Year Built	1981
Type	Single Family
Sub-Type	Detached Single Family
Style	Bungalow
Status	Active

### Community Information

Address	10835 152 Street
Area	Edmonton
Subdivision	High Park (Edmonton)
City	Edmonton
County	ALBERTA
Province	AB
Postal Code	T5P 1Z4

### Amenities

Amenities	Air Conditioner, Carbon Monoxide Detectors, Detectors Smoke, Hot Water Tankless, No Smoking Home, Parking-Visitor, Patio
Parking	Double Garage Detached

### Interior

Interior Features	ensuite bathroom
Appliances	Air Conditioning-Central, Dishwasher-Built-In, Dryer, Garage Control, Garage Opener, Hood Fan, Refrigerator, Stove-Electric, Washer
Heating	Forced Air-1, Natural Gas
Stories	2
Has Basement	Yes
Basement	Full, Partially Finished

### Exterior

Exterior	Wood, Stucco
Exterior Features	Back Lane, Fruit Trees/Shrubs, Landscaped, Playground Nearby, Public Transportation, Schools, Shopping Nearby, Subdividable Lot, See Remarks
Roof	Asphalt Shingles
Construction	Wood, Stucco
Foundation	Wood

### Additional Information

Date Listed May 30th, 2025

Days on Market 6

Zoning Zone 21

DATA IS DEEMED RELIABLE BUT IS NOT GUARANTEED ACCURATE BY THE REALTORS® ASSOCIATION OF EDMONTON. COPYRIGHT 2025 BY THE REALTORS® ASSOCIATION OF EDMONTON. ALL RIGHTS RESERVED. Trademarks are owned or controlled by the Canadian Real Estate Association (CREA) and identify real estate professionals who are members of CREA (REALTOR®, REALTORS®) and/or the quality of services they provide (MLS®, Multiple Listing Service®)

Listing information last updated on June 5th, 2025 at 4:48pm MDT